



Hard Impact							
By Ballistic							
Falcon Version	Patch Status	Theatre of Operations					
Allied Force	V 1.013	Balkans		Balkans 2005		Balkans 2010	
		Korea	X	Korea 2005		Korea 2010	

Mission Success criteria	Fury 1	Destroy Hangju Depot & 2 Manufacturers at Toguri
Mission Partial Success criteria	Fury 1	Destroy Hangju Depot & 1 Manufacturer at Toguri
Mission Success criteria	Cowboy 1	Destroy All 3 bridges at Togu-ri, Pangui & Sariwon
Mission Partial Success criteria	Cowboy 1	Destroy any 2 of the bridges
Mission Success criteria	Falcon 1	No Losses to Fury 1 or Cowboy 1 due to Radar Sams or Air threats until Strike Flights are off Target
Mission Partial Success criteria	Falcon 1	1 Loss to Fury 1 or Cowboy 1 due to Radar Sams or Air threats until Strike Flights are off Target
Air to Air Weapon Loadout (Free or Fixed)	Free	
Air to Ground Weapon Loadout (Free or Fixed)	Free	
Mission Flight plan (Free or Fixed)	Free	

Package Information					
Takeoff time	Callsign	Task	Target	Package # ⁽¹⁾	AC # & type
17:11	Fury 1	OCA Strike	Depot & 2 Manufacturers	1417	3 x F16 C-40
17:12	Falcon 1	SEAD Escort	Radar SAMs & AA inbound to target	1031	2 x F16 C-40
17:14	Cowboy 1	OCA Strike	3 Bridges	1031	3 x F16 C-40
16:33	Chalis 1	AWACs	ELINT		1x E3 Sentry
⁽¹⁾ Blue colour indicates for human use. Red colour indicates for AI only.					

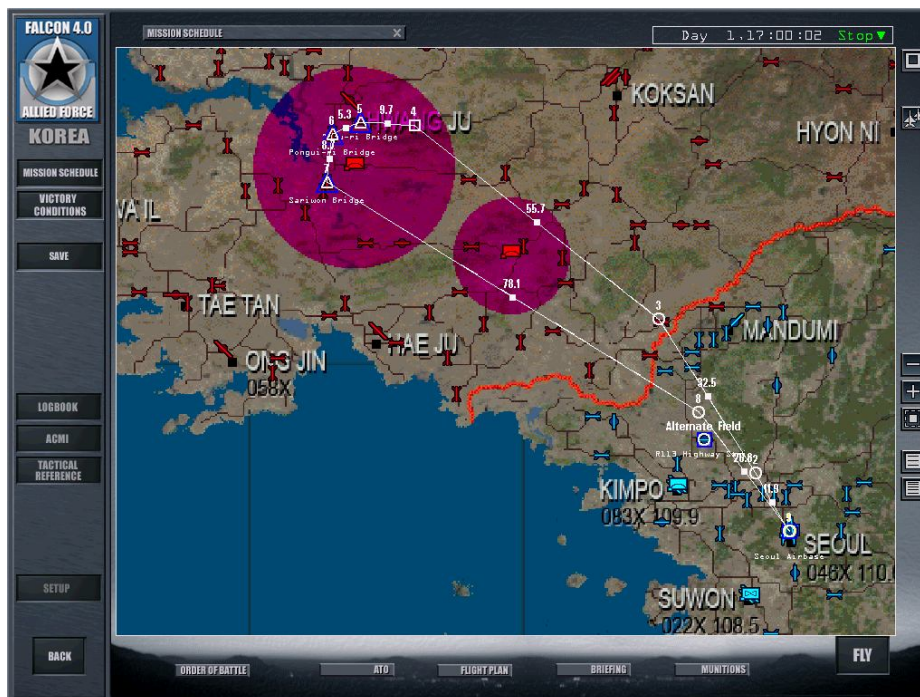
Background

As fast as the Allied Force take out the enemy transportation routes they just seem to be re-built. Losing pilots in sometimes vain attempts to drive back these supply routes is not good for morale and not good for the war.

By exerting maximum “Hard Impact” in one blow a vital supply route of bridges and manufacturing facilities can be flattened. At the same time a Depot being used to co-ordinate enemy activities must be destroyed. The 185th has been assigned the following task;

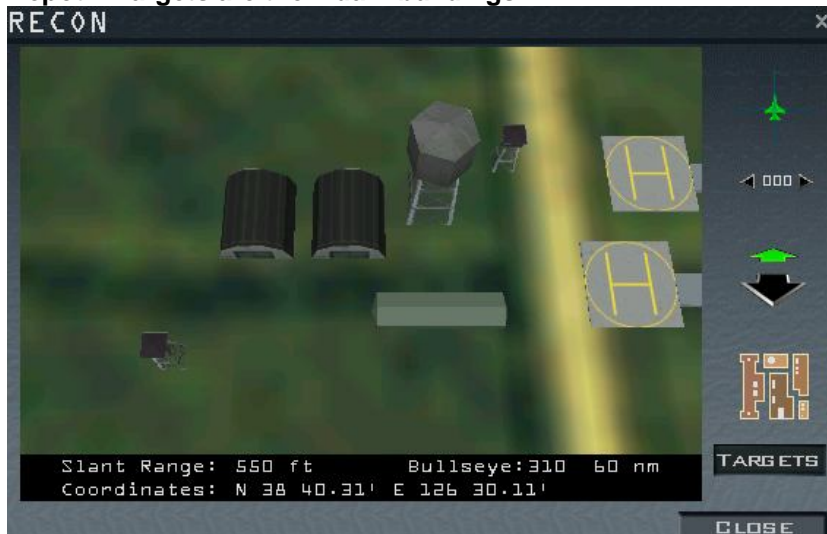
Mission

Destroy All 3 bridges at Toguri, Pangui & Sariwon

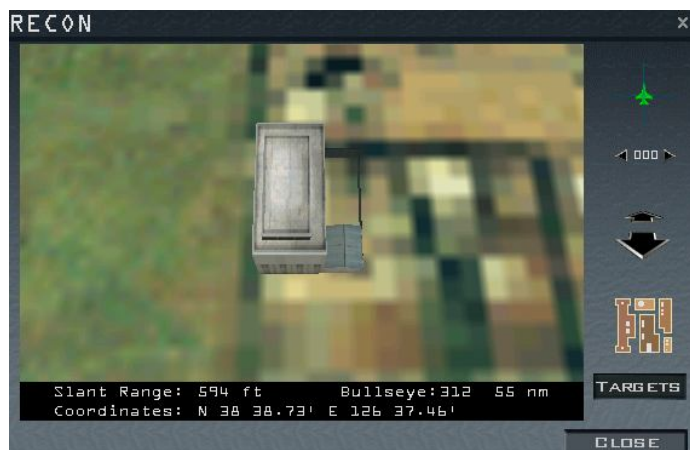
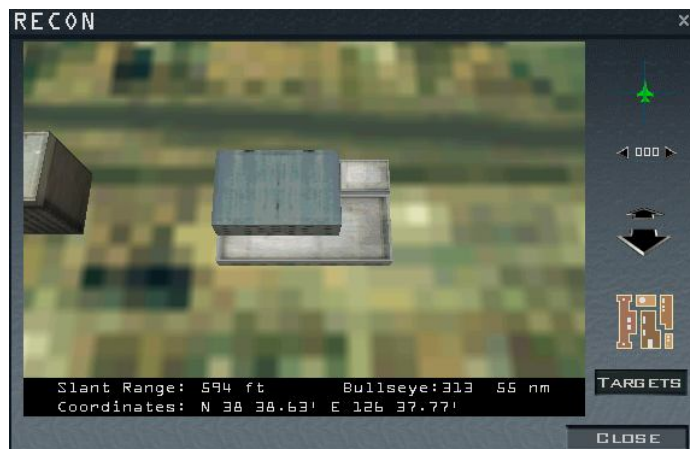


Destroy Hangju Depot & 2 Manufacturers at Toguri

Depot – Targets are the 2 dark buildings



Manufacturers



Enemy

Details of Hostile AC and locations are available in the “Order of Battle” at Mission Planning. SA2 is a primary target for the SEAD Escort, who’s main role will most likely be air to air. Note intel has reported various AAA battalions in the targets area so avoidance is advised.

Friendlylies

Chalis 1 - AWACs

Hawk at Kimpo

Patriot at Choongwon AB

Weather

Wind: 180deg @ 5kts
Temp: 20deg C
Clouds: Clear
Con Layer: 30,000ft msl base
Visibility: 14nm Excellent

GOOD HUNTING